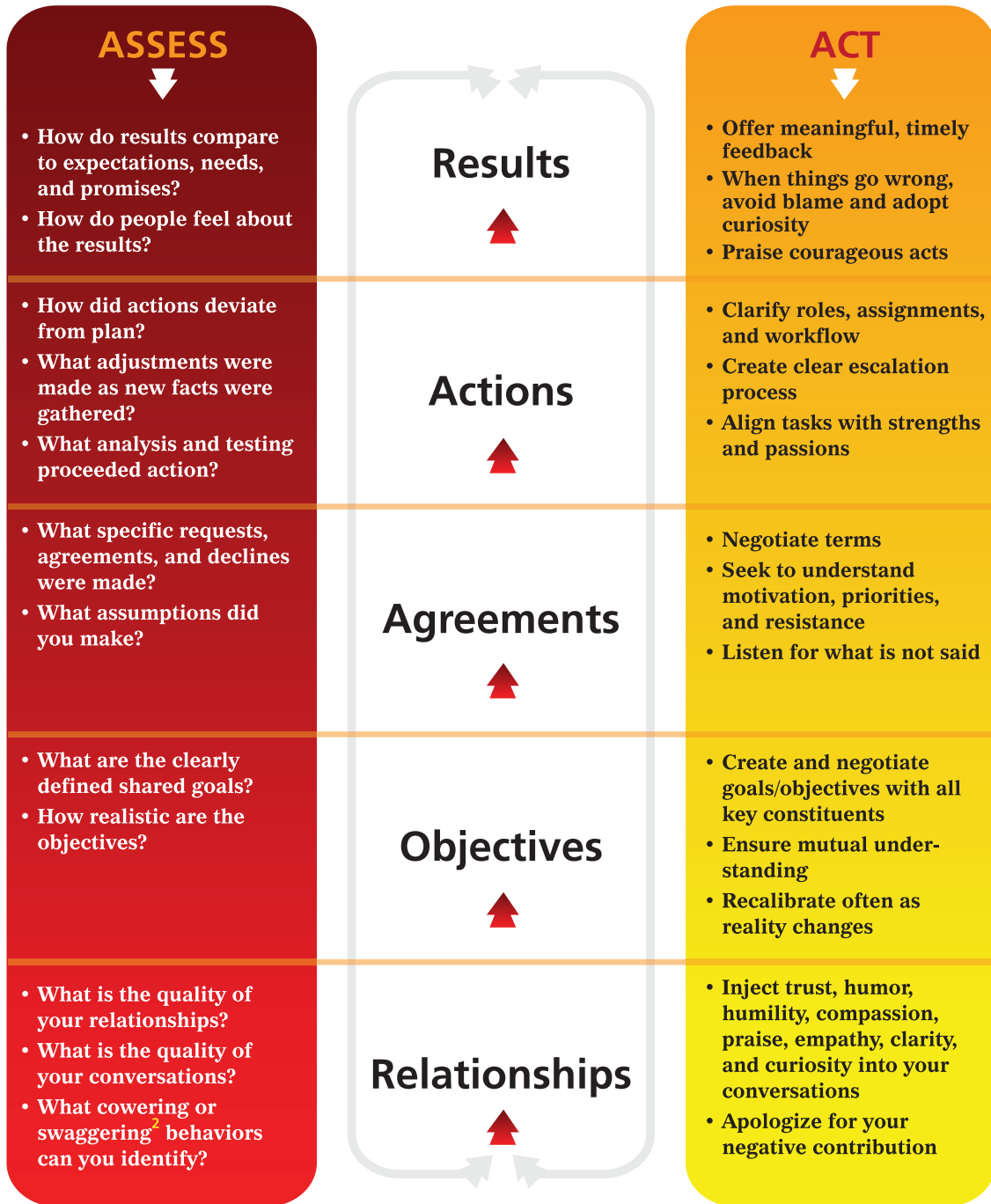


# ROAAR™ Analysis

When things go wrong<sup>1</sup>, see that your analysis finds the real roots of the problem



<sup>1</sup> And they will go wrong. Mistakes are a part of business. A leader's job is to engineer an open learning environment where mistakes are surfaced early, resulting in better results and engaged employees.

<sup>2</sup> See our Confidence Assessment for specific behaviors.